

TIPS ON EXEMPTIONS

- √ Ask for an exemption if you can't do the full 32-35 hours a week on an ongoing basis.
 - ⇒ Ask for a hearing if the county keeps giving you "good cause" for not fully participating instead of an exemption.
- √ Get verification.
- √ Get the Exemption Request Form from your worker. (It's form number CW 2186A, at www.dss.cahwnet.gov/cdssweb/entres/forms/English/CW2186A.PDF)
- √ Get the county decision in writing.
- √ Make sure any Domestic Violence waiver includes stopping the time limit. *Ask for our Domestic Violence brochure and Waiver Request form.*
- √ Check that the exemption starts *when your situation began*, and not from when you turned in the verification.
- √ Check that the county is figuring your lifetime limit on aid correctly. **Appeal any "time on aid" notice that you think lists time you should have been exempt.**
- √ If your situation changes, ask for more or different services.

Denied? Ask for a state hearing. Fill out the back of any Notice of Action or call 800-952-5253.

Call Legal Services:

Prepared by
Legal Services of Northern California
www.lsnrc.net

CalWORKs

Making it Work for You

Exemptions

*When You Are Unable
to Do Welfare to Work*



©LSNC 2011

EXEMPTIONS

WHAT IS AN EXEMPTION?

An "exemption" means you don't have to do the welfare-to-work program. Many exemptions also don't use up your 48-month limit on aid.

VOLUNTEERING WHILE EXEMPT



People exempt from welfare-to-work can volunteer. Volunteers can get education and training. Volunteers also get support services, like childcare and transportation. You can't be sanctioned if you are a volunteer.

- The county must approve your volunteer plan. The activity in which you want to volunteer must help you get employment skills.
- If you don't do your volunteer plan, you will not be sanctioned (no grant cut). The county will "disenroll" you. You can re-volunteer when you are ready to do the plan.
- The county may not have funds for support services for volunteers. *Get your county's written policy on this.*

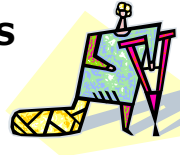


VERIFICATION

You will need to prove that you should have an exemption.

- For your own disability, the county will give you a form, or your doctor can write a letter.
- For disabled household members, have their treating doctor or therapist put in writing that the person needs someone to be home to care for them.

WHAT EXEMPTIONS ARE THERE?



• **DISABILITY**

— *You are disabled*

Your condition will last 30 days or more and it "significantly impairs" working or doing welfare-to-work.

— *Disabled household member*

Caring for an ill or disabled person in your house "impairs" your working/doing welfare-to-work.

— *You are pregnant*

If it "impairs" your working/doing welfare-to-work. *If this is more than 30 days, apply for a disability exemption to stop the 60-month clock.*

• **CARE OF AN INFANT**

If you have a newborn, you can be exempt. *Ask your worker to show you the county policy on how long you can be exempt.* For the first child, this can range from 6-12 months. For children after that, it can range from 12 weeks to 6 months.

• **YOUNG CHILD EXEMPTION**

If you care for a child between 12-24 months, or 2 children under age 6, you are exempt. (Your county may also have an exemption for children 24-35 months old.) *If you are 18 or 19 and do not have a high school diploma, you cannot get this exemption.*

• **NO FUNDS FOR SUPPORT SERVICES**

If the county can't pay for the services you need to do your welfare-to-work plan.

• **FULL-TIME VISTA VOLUNTEERS**

• **DOMESTIC VIOLENCE**

Current or past violence, against you or someone in your household, that puts the person at further risk or unfairly penalizes them. This includes threats, sexual or

emotional abuse, or other acts meant to control you in a domestic relationship. This can include relatives and housemates. *Ask for a "waiver" of the time limits and other eligibility or work rules.*

• **FOSTER CARE**

For relatives (*not* parents) taking care of children in/at risk of foster care. Caring for the children involves more than regular parenting *and* limits your doing work/welfare-to-work.

• **AGE**

- Over 60 years old.
- Under 16
- 18 or under and in school.

About to graduate? Register for college *before* your first welfare-to-work meeting to guarantee staying in school.

• **Indian Land**

If you live on tribal land, where unemployment is more than 50%

Which Ones Stop The 48-Month Clock?

- Your Disability
- Caring for a Disabled Household Member
- Caring for a Foster Child or child at risk of Foster Care
- You are over 60 years old
- Caring for a young child(ren)
- No funds for support services
- Domestic violence *if the county stops your 48-month clock.*
- Living on Indian land/50% unemployment

