

## SOLVING PROBLEMS

### Getting A Good Plan

- Ask questions. Negotiate the terms of the plan.
- Bring a friend or advocate to help you review the contract.
- Don't agree to a plan that you know you won't be able to do.

### If Your Plan is Bad...

- You have **3 working days** to ask for changes. Call right away, and follow up **in writing!**
- You have **30 days** from starting your plan to ask for a new assignment.
- Ask for a new plan if your situation changes so you can't do your plan.
- If the County won't change your plan, ask for a **3rd Party Assessment**. A non-county person will review your assessment and plan.

### Community Service Time

Not getting useful skills from your unpaid work? Ask for a new assignment. or challenge your plan.

Problems? Ask for a state hearing. Fill out the back of any Notice of Action or call 800-952-5253.

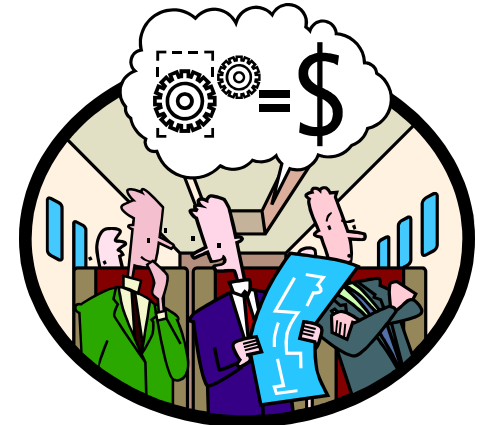
**Call Legal Services**

## CalWORKs

*Making it Work for You*

# Welfare-to-work

## *How It Works*

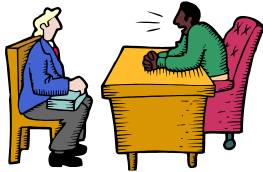


Prepared by  
Legal Services of Northern California  
[www.lsn.net](http://www.lsn.net)

# WELFARE-TO-WORK

## WHAT IS WELFARE-TO-WORK?

- Adults in CalWORKs must do “work activities” to get cash aid. Unless excused, one adult on aid must do 32 hours/week; two parents do 35 hours/week. See the “Exemptions” brochure for when you may be excused.
- You can get training and services to help you earn enough to get off welfare.



## ORIENTATION AND APPRAISAL

- The “Orientation” tells you about the welfare-to-work rules. The county next does an “appraisal” to see:
  1. If you should be excused from welfare-to-work;
  2. Ask if you need services like childcare and transportation to do the program.
- Appraisal is often at the same time as the orientation.)

The county can't make you do the **Appraisal or Job Search** you are not on cash aid yet.

## JOB SEARCH

After appraisal you will be sent to **job search** for up to **four weeks**.

- You don't have to do job search if it conflicts with your job or county-approved schooling.
- You can ask to skip job search if it will not be useful for you. *Ask to see the county policy on this.*
- The County can make job search longer or shorter than 4 weeks. Ask your worker if you want this.



The county won't let you shorten or skip Job Search? Ask for a hearing!

## ASSESSMENT

Next, the county does an “assessment” of your education and work experience. It uses this information to make your welfare-to-work plan.



- If the county thinks you have a learning, physical, or mental impairment, or if *you ask* for a disability review, the county must refer you to a specialist. The specialist will see if you have a condition that prevents you from doing a welfare-to-work program or if there are services

that can help you.

## THE WELFARE-TO-WORK PLAN

The **welfare-to-work plan** lists what you will do to get the skills you need to go from welfare to work. You and the county are supposed to *jointly develop* the plan. See the “WTW Plan” brochure for more information. The plan also lists the services you will get to do your plan. See the “Support Services” brochure.



## DISAGREE WITH THE ASSESSMENT/PLAN?

Ask **in writing** for a “3rd Party Assessment.” A non-county person will review your needs and create a plan. *Ask for a state fair hearing if you don't get what you want.*

## REAPPRAISAL

Finished your welfare-to-work plan, but don't have a 32-35 hour job? The county will do a “**reappraisal**” of your skills and needs. If needed, you should get more activities.